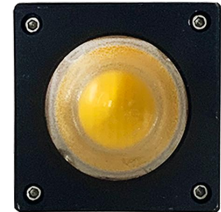


LED Light LED-36W

- Suitable for high-speed camera fill light, no flicker;
- Anti-Shock design;
- Support daisy chain and star connection;
- Luminous flux > 6000lm;
- Illumination > 14000lx @ 0.5m direct.

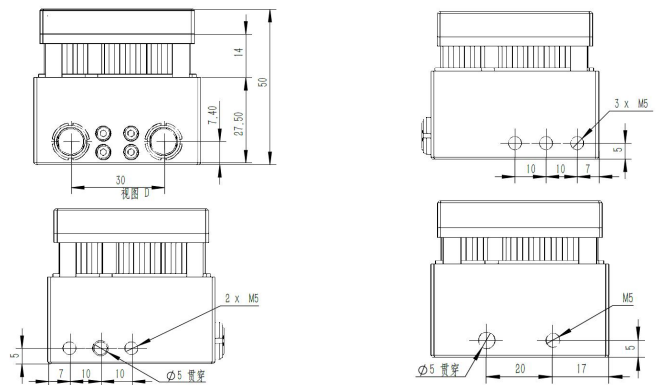


Onboard LED light LED-36W, using high-power LED matrix lamp, get very high conversion efficiency from current to luminous flux. The LED matrix is directly installed on the copper pillar radiator, and the high-speed fan is added to achieve a good heat dissipation effect.

Specification (@25°C):

Name	Unit	Value
Rated Power	W	36
Rated Voltage	V	36
Max. Power	W	50
Dimension	mm	54 × 54 × 50
Weight	g	105
Connector	2 ↑ LEMO EGG.0B.302	
Transfer Max. Current	A	5
Anti-Shock	g	>100
Opera. Temperature	°C	-40~50

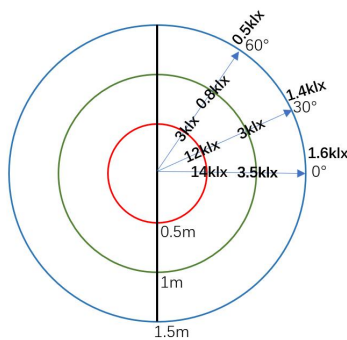
Dimension:



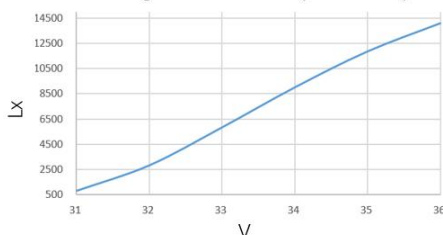
Application example: it is Max. support 2lines×4 LED unit/line when JEBOOL battery BAT-36V is connected.



Illumination distribution and “Lx vs. V”



voltage vs. illuminance (0.5m direct)



Connector Define (LEMO EGG.0B.302)

Pin 1	Power+
Pin 2	Power-